



## BERINE & BOKWE FOUNDATION

**“Hope and Smile for Abandoned Widows and Orphans”**

**BI-ANNUAL REPORT: JANUARY – JUNE 2025**



# BEBOF

**Head office: Bonduma Buea, Cameroon**

## FOREWORD FROM THE EXECUTIVE DIRECTOR

As we reflect on the past year, 2024 has been a year of growth and resilience for the Berine and Bokwe Foundation (BEBOF). Despite numerous challenges, our commitment to empowering widows, orphans, internally displaced persons (IDPs), and underprivileged communities in Cameroon remains steadfast.

We have dedicated our efforts to bring smiles, support, and hope to those who need it most, all while promoting economic, social, and financial empowerment. In 2025, we continued expanding our outreach across villages, engaging community leaders to advocate for women's rights and form support groups.

Our mission to eradicate deeply ingrained societal issues like disinheritance and discrimination against women has made meaningful progress. Through dialogue, advocacy, and capacity building, we've helped vulnerable women rebuild their lives.



# BEBOF



### **Humanitarian Action:**

The BEBOF Mobile HUB has extended its reach to some of the most remote and underserved parts of the community, ensuring access to essential healthcare services for pregnant women.

Through comprehensive community health strengthening programs including antenatal care (ANC) and delivery services we have addressed critical healthcare needs and empowered communities to take ownership of their health and well-being.

Our Maternal Health Mobile HUB provides holistic care and transportation for pregnant women, bringing high-quality maternal health services directly to their doorsteps. This initiative ensures that pregnant women receive the support they need throughout pregnancy, childbirth, and beyond.

Our health program proudly covers ANC and delivery services for Residents, IDP, Host and Returnee making maternal and child health a priority in every corner of the community we serve.



# BEBOF

## Table of Contents

.....	1
EXECUTIVE SUMMARY .....	5
1. Overview.....	6
1.1.0 Organizational Background.....	6
1.1.1 THE STORY BEHIND THE CREATION OF BEBOF .....	6
1.2 Mission, Vision, and Core Values .....	8
1.2.1 Mission .....	8
1.2.2 Vision .....	8
1.2.3 Core Values.....	8
1.3 Organizational Structure.....	9
1.3.0 A NEW CHAPTER OF IMPACT AND TRANSFORMATION.....	9
Innovation Basecamp – Nairobi (January 20–25, 2025) .....	10
1.3.1 Transforming Traditional Birth Attendants to Community Health Workers (Feb 26 – May 9, 2025) .....	10
International Women’s Day in Konye – CEO’s Advocacy in Action (March 8, 2025).....	12
Empowering CHWs – Second Phase Training in Match (May 6–9, 2025) .....	12
1.3.2 Policy Engagement: Regional Public Health Stakeholder Meeting (May 14, 2025)... 13	
.....	14
A Heartwarming Visit to Pendamboko in May 2025 .....	14
Technical Visit by Regional Delegation of Public Health (May 23, 2025).....	14
Listening to Farmers: Agricultural Needs Assessment (June 19, 2025) .....	15
Community Based Tracking for Immunization workshop (June 18 <sup>th</sup> to 22 <sup>nd</sup> , 2025) .....	16
1.4.0 Moving Forward with Purpose BEBOF in 2025.....	17
1.4.1 STRATEGIC PERFORMANCE SUMMARY 2025 .....	17
1.4.2 Project Objectives .....	17
1.4.3 MH-MH Project Activities 2025 .....	18
1.4.4 STRATEGIC OUTCOME PERFORMANCE .....	18
1.4.5 SWOT Analysis of Maternal Health Project .....	21





## EXECUTIVE SUMMARY

The Berine and Bokwe Foundation (BEBOF) is a women-led, non-profit association established in May 2017. Our core mission is to support and empower abandoned widows, orphans, internally displaced persons (IDPs), and underprivileged individuals across Cameroon. In 2023, BEBOF intensified its efforts to combat issues like women's disinheritance, discrimination, and social exclusion, particularly in rural and underserved communities.

This year 2025, we have implemented several impactful initiatives.

- Maternal Health Empowerment
- Community Engagement & Advocacy: We successfully engaged over 40 communities, working closely with local chiefs and community heads to form groups of widows for support and empowerment.
- Capacity Building & Training: We provided training and economic support to women, enabling them to start small businesses through our self-help group initiatives. These programs offer financial literacy and business skills to help widows become self-reliant.
- Green Business Empowerment: We introduced sustainable practices, encouraging widows to engage in green businesses such as organic farming and soap production. This not only provides income but promotes environmental sustainability.

BEBOF has remained steadfast in its commitment to creating an inclusive environment for women and the underprivileged, and we look forward to expanding our reach in the coming year.



## 1. Overview

### 1.1.0 Organizational Background

The **Berine and Bokwe Foundation (BEBOF)** is a non-profit, women-led organization established in May 2017. BEBOF was founded to address the growing needs of abandoned widows, orphans, internally displaced persons (IDPs), and underprivileged individuals in Cameroon. Operating primarily within the North West and South West regions, the foundation's mission is to uplift vulnerable populations through economic, spiritual, social, and financial empowerment. Since its inception, BEBOF has worked to create a support system for widows who have been denied inheritance rights, as well as offering psycho-social support and capacity-building initiatives for these marginalized groups.

The foundation has gained recognition for its grassroots approach to community engagement, focusing on forming support groups within local communities and advocating for women's rights. In collaboration with community leaders and chiefs, BEBOF has successfully created over 40 community groups of widows across various regions in Cameroon. These groups provide a platform for empowerment, financial independence, and mutual support.

### 1.1.1 THE STORY BEHIND THE CREATION OF BEBOF

My name is **Numa Berine Bere**, and I am the Founder of the Bokwe and Berine Foundation (BEBOF). This foundation was born out of personal tragedy and resilience.

In 2016, I lost my husband. We had two children, the youngest just two weeks old at the time. Shortly after the funeral, my husband's family drove us out of our home, seized our belongings and financial documents, and left us with nothing. I was forced to sleep outside with my newborn and toddler, with no job, no income, and no means to care for my children. I fell into deep depression and struggled with suicidal thoughts. My baby nearly died due to lack of access to healthcare, and my older son had to drop out of school.



Through the kindness of a sister who lent me \$80, I started a small foodstuff shop. With that humble beginning, I earned enough to pay rent, feed my children, and send them back to school. From that turning point, I found strength not just for myself but for others.

I founded **BEBOF** to empower widows because no woman should have to suffer because her husband has died. I began visiting communities, engaging with traditional leaders, and asking town criers to announce gatherings at the palace. There, I distributed food items to widows, offering them hope and solidarity.

What started as a small act of kindness has since grown into a foundation that uplifts and empowers marginalized women and families across communities.

Before my husband died, he was hospitalized with 4<sup>th</sup> stage cancer; while I was also due to give birth in Matoh with my mother. There was no maternity and as a result I was forced to give birth through the help of traditional birth attendants who received my baby in an unhygienic condition and they used an old razor to cut off the umbilical cord of my baby plus some traditional herbs to stop the bleeding which didn't work. Due to excessive bleeding, I passed out as I was told when I regained consciousness and was told they had to send someone to a neighboring community to get first aids kits (Misoprostol) which was used to save my life.

Two weeks after the birth of my second child my husband passed away and his family disinherited me from his will and drove us out of his house. I was homeless, helpless and vulnerable and was left to caterer for my 2 children and I coupled with the fact that I had just lost my husband.

I joined a church group which assisted me during those trialing moments and was empowered to start up an NGO to support widows and poor unemployed women who could be caught up in a similar situation like I was. I was empowered to fight for women's mental and physical Health

## 1.2 Mission, Vision, and Core Values

### 1.2.1 Mission

BEBOF's mission is to bring hope, advocate for women's rights, and empower abandoned widows, orphans, IDPs, and underprivileged individuals. By fostering spiritual, economic, social, and financial growth, the foundation aims to create Sustainable improvements in the lives of those most affected by societal inequalities in Cameroon.

### 1.2.2 Vision

To build a future where widows, orphans, and the underprivileged are empowered to lead independent lives, free from discrimination, poverty, and injustice. BEBOF envisions a society where marginalized groups are equipped with the skills, resources, and support needed to thrive, regardless of their background or circumstances.

### 1.2.3 Core Values

- ✚ **Empowerment:** Strengthening the capacity of widows, orphans, and IDPs to take charge of their lives through economic, social, and financial initiatives.
- ✚ **Advocacy:** Actively promoting and protecting the rights of vulnerable populations, particularly women, in communities where they are often marginalized.
- ✚ **Collaboration:** Building strong partnerships with local chiefs, community leaders, and stakeholders to create lasting solutions to the challenges facing widows and underprivileged groups.
- ✚ **Compassion:** Ensuring that all actions are driven by a deep sense of care and commitment to improving the well-being of those in need.
- ✚ **Sustainability:** Promoting long-term, sustainable practices that foster economic independence and environmental awareness, such as green business initiatives.



### 1.3 Organizational Structure

BEBOF operates with a well-defined organizational structure that allows for efficient implementation of its programs and outreach efforts. The foundation is led by the **Executive Director**, who is responsible for overall strategy, partnerships, and project oversight.

- **Board of Directors:** A group of dedicated individuals who provide governance and strategic direction to ensure the foundation's objectives are met.
- **Management Team:** Comprising the Program Manager responsible for key initiatives such as Capacity Building, Community Engagement, and Economic Empowerment. This team ensures the effective coordination of day-to-day operations. Our Team also has the following personnels: the Finance officer, the communication officer, monitoring and evaluation officer, the administrative assistant and other project staffs who work in the field.
- **Field Coordinators:** Local leaders who serve as a bridge between BEBOF and the communities it serves. These coordinators oversee the implementation of projects at the grassroots level and report back to the management team.
- **Volunteers and Support Staff:** A network of volunteers who assist with field activities, community outreach, and logistical support for events and initiatives.

Together, this structure enables BEBOF to maintain its impact across multiple regions, while ensuring that all activities are aligned with the foundation's mission and values.

#### 1.3.0 A NEW CHAPTER OF IMPACT AND TRANSFORMATION

The first half of 2025 has been a journey of resilience, innovation, and growth for the Berine and Bokwe Foundation (BEBOF). From the high-level engagements in Nairobi to the grassroots training efforts in Matoh and Konye, BEBOF has remained true to its mission: empowering communities and transforming lives, particularly for women, widows, orphans, and the underserved

## Innovation Basecamp – Nairobi (January 20–25, 2025)



BEBOF kicked off the year by participating in the CHIC Innovation Basecamp in Nairobi. Our presence at this international gathering of humanitarian health innovators was both timely and transformative.

The event brought together practitioners, researchers, and organizations working to find impactful solutions in fragile settings. BEBOF's

delegation had the opportunity to share key insights from the Maternal Mobile Hub Project, engage in meaningful dialogue with stakeholders, and receive valuable feedback to strengthen community health strategies.

The engagement also provided a vital platform to explore new funding opportunities for maternal health service delivery, while fostering partnerships and collaborative networks.

Additionally, it served as a powerful moment to refine our strategic approach, deepen stakeholder alignment, and reinforce BEBOF's commitment to innovative, community-driven solutions in maternal and child health.

### 1.3.1 Transforming Traditional Birth Attendants to Community Health Workers (Feb 26 – May 9, 2025)

In hard-to-reach areas like Matoh, traditional birth attendants (TBAs) have long been the backbone of maternal care. But with limited training and outdated practices, their work often posed serious risks to both mother and child. BEBOF identified this gap and embarked on a transformation program turning TBAs into trained Community Health Workers (CHWs).

Over several weeks, these women received practical and theoretical training in safe

delivery, hygiene, identifying pregnancy complications, and maternal communication. The program empowered them to transition from tradition-bound methods to evidence-based Practice thereby reducing maternal mortality



**OUR TRAINED COMMUNITY HEALTH WORKERS IN FULL CAPACITY**

**BEBOF**



## **International Women's Day in Konye – CEO's Advocacy in Action (March 8, 2025)**

On March 8th, our CEO Madam Numa Bere joined the Women's Day celebration in Konye, where she addressed a large gathering of women, traditional rulers, and local stakeholders. During her speech, she called for stronger community solidarity in addressing maternal emergencies.

She emphasized on the vital role that women play in the early detection and timely referral of pregnancy-related complications. Her message was clear and compelling: through unity, education, and swift action, maternal deaths are not only preventable they are a shared responsibility.



This call to action reinforces the importance of community-based awareness and the empowerment of women as frontline advocates for maternal and child health.

## **Empowering CHWs – Second Phase Training in Match (May 6–9, 2025)**

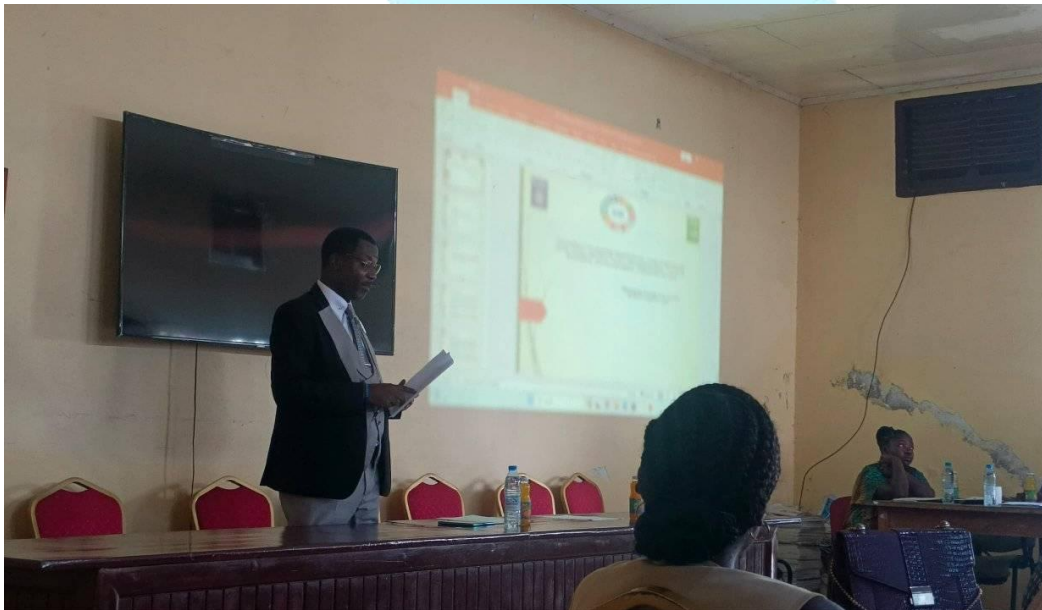
BEBOF returned to Match in May to continue training CHWs under the Maternal Health Empowerment Project. This second phase emphasized real-life case discussions, respectful care, record keeping, newborn care, and postpartum health.

With renewed skills, these CHWs are now better equipped to deliver lifesaving care in their communities. These sessions also served as mentorship opportunities, further enhancing local ownership of maternal health solutions.

### 1.3.2 Policy Engagement: Regional Public Health Stakeholder Meeting (May 14, 2025)

BEBOF's Monitoring and Evaluation Officer and Project Lead were honored to join a strategic consultation meeting led by the Regional Delegate of Public Health for the Southwest Region. This high-level meeting focused on harmonizing efforts across organizations implementing health projects.

BEBOF presented its maternal health interventions in Matoh, contributed to the mapping of existing projects, and advocated for stronger referral systems and accountability. The experience strengthened our institutional credibility and opened doors for future collaboration.



# BEBOF



## **A Heartwarming Visit to Pendamboko in May 2025**

As part of our project impact assessment, BEBOF's team visited Pendaboko where we were warmly welcomed by the community especially the widows who surprised us with a special breakfast.



It was a powerful moment of appreciation and connection, and a testimony to the genuine impact of our grassroots work. Stories were shared, achievements were discussed, and the future was envisioned together.

## **Technical Visit by Regional Delegation of Public Health (May 23, 2025)**

A landmark moment for BEBOF's maternal health work came when key staffs from the regional Delegation of Public Health visited the BEBOF's office.

## **Project Highlights and Key Takeaways**

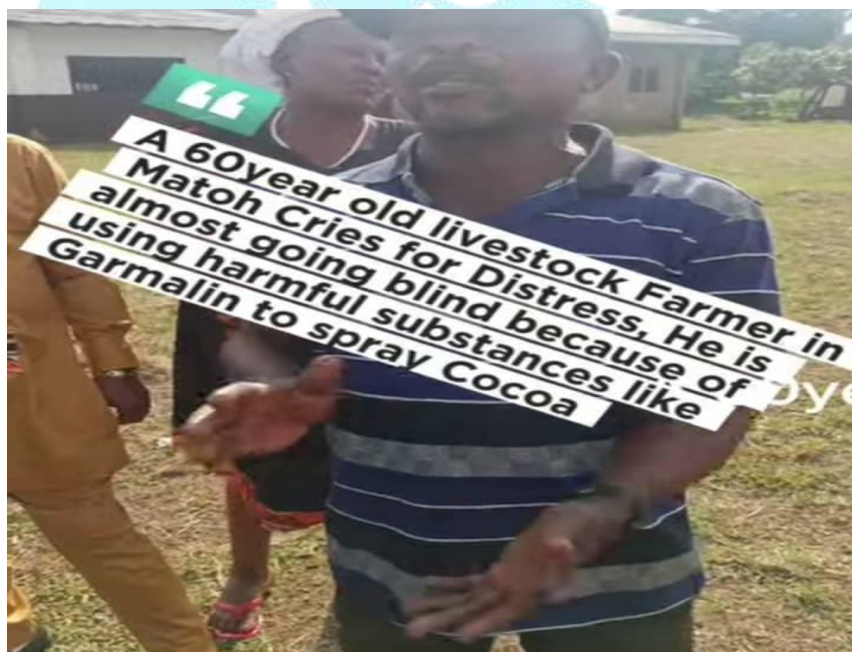
During the visit, stakeholders were presented with significant project milestones, including:

- Full antenatal care (ANC) and safe delivery support provided to women.
- On-going assistance to beneficiaries through the Maternal Mobile Health Hub.
- Distribution of delivery kits to health centers to enhance safe birthing practices.
- Presentation of findings from a situational assessment conducted at the Matoh Health Center.

In addition, the team addressed the challenges associated with implementing healthcare initiatives in conflict-affected zones. The visit served as a powerful reminder of the need for sustained collaboration, transparent communication, and adaptive strategies to continue reaching vulnerable populations effectively.



## Listening to Farmers: Agricultural Needs Assessment (June 19, 2025)



BEBOF conducted a targeted needs assessment with farmers in Matoh. The most shocking revelation was the complete lack of veterinary services in the area. Livestock diseases, unsafe use of chemicals in cocoa farming, and financial losses are daily realities.



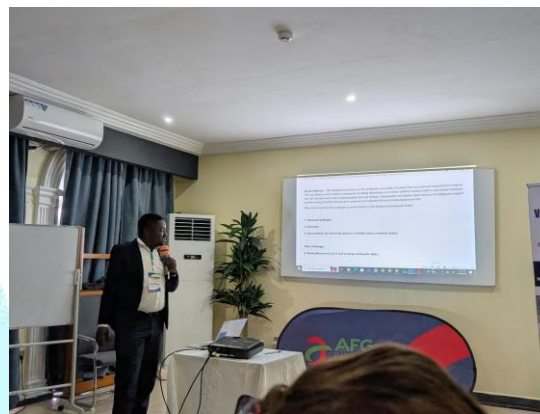
A 60-year-old livestock farmer describe the situation touchingly: "We once thrived with our cattle. Today, there's no veterinary support. Each year, we lose pigs and goats. Even the chemicals used for cocoa farming are harming our eyes."

This powerful testimony highlights an urgent and often overlooked intersection where public health meets agricultural livelihoods. It signals a new frontier for BEBOF's intervention: integrated strategies that address both animal health and human well-being in farming communities.

### **Community Based Tracking for Immunization workshop (June 18<sup>th</sup> to 22<sup>nd</sup> , 2025)**

During the recent Community-Based Tracking (CBT) workshop featuring presentations from Cameroon, Nigeria, Madagascar and Bangladesh participants demonstrated how citizen-generated data and CSO partnerships can bridge last-mile gaps, strengthen accountability and ultimately raise immunization coverage in hard-to-reach areas. Inspired by the collaborative energy of frontline health workers and data experts working together to ensure that every child counts, BEBOF's project Lead highlighted how our Maternal Health Mobile Hub will embed those same CBT principles real-time community mapping, volunteer scorecards and feedback loops to deliver antenatal care, vaccines and birthing kits to mothers in Matoh and neighboring villages. When communities track their own services, they become the stewards of their health outcomes. We are deeply grateful to Gavi, the Vaccine Alliance; Empower Women Foundation; the Johns Hopkins Bloomberg School of Public Health; and the International Vaccine Access Center at Johns Hopkins BSPH for convening this workshop, fostering rich discussions and forging new partnerships that will guide our rollout and advance equitable, data-informed health services.





#### 1.4.0 Moving Forward with Purpose BEBOF in 2025

The first half of 2025 has laid a strong foundation for BEBOF's mission, marked by significant strides in health system strengthening, community empowerment, and policy engagement. Together, these efforts are accelerating our momentum toward more inclusive and lasting impact.

##### 1.4.1 STRATEGIC PERFORMANCE SUMMARY 2025

In 2025, BEBOF is currently implementing a comprehensive project on Maternal and Child Health, dedicated to improving the well-being of mothers and children in the corneal Health District SW Region OF Cameroon. Recognizing that the health of Mothers and Babies deeply interconnected, the project adopts an integrated approach that prioritizes maternal and child health as a foundation for community resilience and sustainable development.

##### 1.4.2 Project Objectives

- Improve access to quality maternal healthcare services, especially for pregnant women and newborns in underserved communities.
- Reduce maternal and infant mortality rates through early detection, skilled birth attendance, and postnatal care.
- Strengthen community awareness and education on safe motherhood, family planning, and nutrition.

- Promote collaboration among healthcare providers, traditional birth attendants, and community leaders to support a continuum of care.

### 1.4.3 MH-MH Project Activities 2025

In 2025, we are implementing a series of impactful activities under the MH-MH (Maternal Health–Mobile HUB) project to improve maternal and child health outcomes within the community.

#### Key Activities

Key activities	Description	Results
Sensitization	Number of persons sensitized	681
Distribution of delivery kit	Number of delivery Kits distributed	175
financial support	Number of women supported for ANC and Delivery	100
Training of CHWs	Number of CHWs trained	32

### 1.4.4 STRATEGIC OUTCOME PERFORMANCE

#### Expanding Reach and Impact: MH-MH Project Progress 2025

As of mid-2025, the MH-MH (Maternal Health–Mobile Hub) Project has reached a total of **681 individuals** in the Match community, located in the Southwest Region of Cameroon. This includes **378 males and 303 females**, demonstrating inclusive engagement in advancing maternal health outcomes.

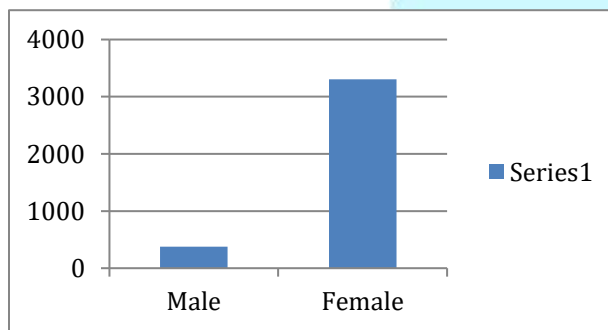
The initiative remains focused on ensuring consistent access to essential maternal healthcare services in underserved areas. Key achievements to date include:

- 13 women supported with comprehensive maternal health interventions



- 100 pregnant women receiving antenatal care (ANC) services
- 32 community health workers trained to strengthen service delivery and deepen community engagement. These trained workers are now playing a vital role in extending outreach and increasing awareness of critical maternal and child health issues. Collectively, these efforts underscore BEBOF's sustained commitment to expanding access to quality, community-based healthcare and fostering healthier futures for women and families in conflict-affected regions.

**Figure 1.0 Sex distribution of population sensitized**



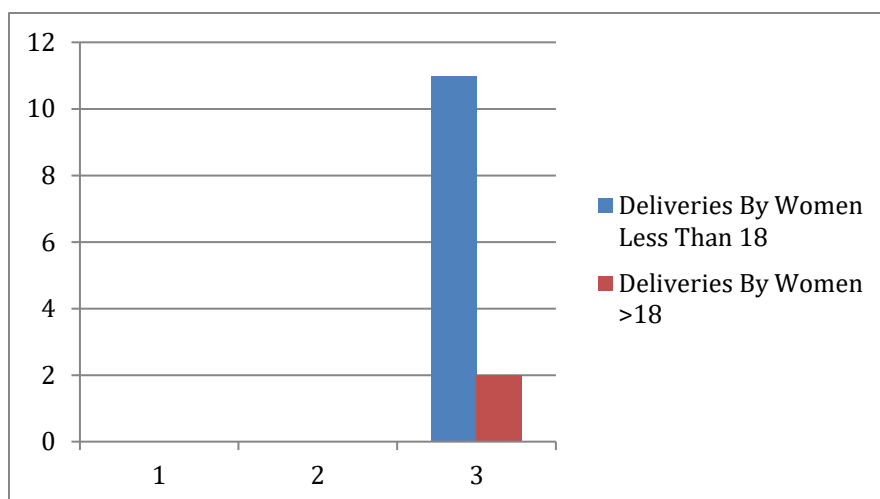
A total of **681 individuals** reached through sensitization in the Matoh community. This includes **378 males** and **303 females**, reflecting the project's inclusive approach to raising awareness of maternal and child health

as demonstrated in Figure 1.0 as demonstrated in Figure 1. This gender-disaggregated data highlights the project's commitment to engaging all segments of the population in improving health outcomes and fostering community ownership of maternal health initiatives

**Figure 2.0 Age distribution of Delivery**

A total of **13 women** has successfully given birth through the support of the MH-MH Project in Matoh from January to April 2025. Among them, 11 are adults aged 18 and above, while 2 are adolescent's under 18. These outcomes are part of a broader initiative that has directly reached 861 individuals within the community, underscoring the project's inclusive and responsive approach to maternal and reproductive healthcare especially for vulnerable groups, including adolescent mothers below the age of 18 as demonstrated in **Figure 2.0**

These outcomes are part of a broader initiative that has directly reached 861 individuals within the community, underscoring the project's inclusive and responsive approach to maternal and reproductive healthcare especially for vulnerable groups, including adolescent mothers.



#### 1.4.5 Key performant indicators

Key performant indicators	Frequency
Number of women and girls receiving antenatal care through the MH-MH mobile clinic	100
Number of outreach and community awareness event conducted	4
Number of birth Kits Distributed	175
Number of safe delivery recorded by women using the mobile HUB	13
Number of women and youths trained on safe delivery practice and use of misoprostol	32
Number of children brought forth in the community	13
Number of people sensitized	681

### 1.4.5 SWOT Analysis of Maternal Health Project

#### Strength

- Mobile outreach programs reach remote and underserved populations effectively.
- Community health worker training builds local capacity and trust.
- Provision of delivery kits and financial support encourages uptake of ANC and safe delivery.
- Holistic services (care + transportation) reduce maternal and neonatal risk.
- Partnership with community leaders helps drive behavior change and uptake.

#### Weaknesses

- Limited health infrastructure in Match affects quality of care.
- Insufficient skilled health personnel to manage high caseloads.
- Resource dependency reliance on donor funding for continuity.

#### Threats

- Security risks from Non-State Armed Groups (NSAGs), affecting field mobility and service delivery.
- Political instability impacting funding and program support.
- Economic downturns reducing available resources for health.

#### Opportunities

- MH-MH mobile HUB to extend care when physical access is limited.
- Strengthening local partnerships to foster sustainability and resilience.
- Capacity building initiatives to empower more community health workers.
- Awareness campaigns to improve uptake of maternal health services.
- Advocacy for stronger government commitment to maternal and child health.

## 1.5.0 Partners

We extend our heartfelt gratitude to our valued partners and supporters:

- Humanitarian Grand Challenge for generously funding the Mobile Health Hub
- One Day's Wages for their dedicated fiscal sponsorship and the Stop Gap Support
- Regional Delegation of Public Health for their steadfast collaboration
- And most importantly, the resilient communities we serve, whose trust and partnership inspire every step we take
- As we move forward, we reaffirm our unwavering commitment to a future where no woman dies giving life and where every widow, orphan, or displaced person finds hope, dignity, and empowerment through inclusive, community-driven care.

### See Our Works

website: <https://bebof.org/>

Youtube: <https://youtu.be/Kz1FeJPSBvU>

Facebook page: [https://web.facebook.com/berinebokwe/?\\_rdc=1&\\_rdr](https://web.facebook.com/berinebokwe/?_rdc=1&_rdr)

### OUR PARTNERS



A  
PARTNERSHIP  
OF



**USAID**  
FROM THE AMERICAN PEOPLE



Ministry of Foreign Affairs of the  
Netherlands



In partnership with  
**Canada**



Grand Challenges Canada  
Grands Défis Canada



## **End of Report**

**Compiled by: Program Team, BEBOF**

**Date: July 15<sup>th</sup> 2025**



# **BEBOF**